

AURORA

159 Great Junction Street, Leith, Edinburgh
1-8 August 2004

Opening event Saturday 31 July
Performance: Louise Adam
Live band: Surface Pressure Sound System

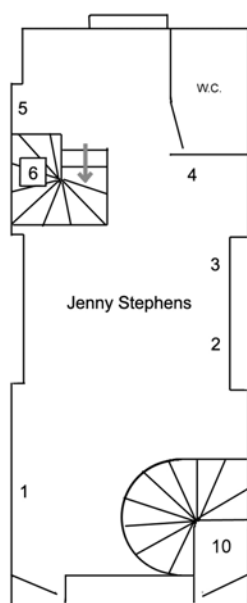
Tommy Grace
Jenny Stephens

"A lone figure wandering the regenerated canal systems of the city's periphery... The summer sun glinting on the calm water and broken bottles littering the carefully planned pathways... Gazing through the lush grasses, entranced by his own reflection... Softened, haunted by the echo of a dream, an idyll, he weeps at the brave optimism of a promised utopia."

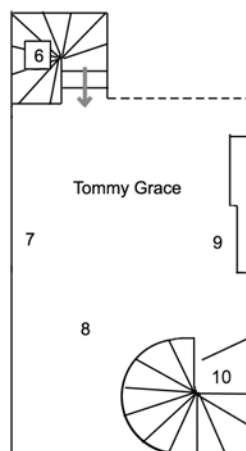
Ruth Beale 2004

Tommy Grace's paintings and photographs portray fantastical imagined landscapes. His beautifully complex yet playful works combine the mythical with the mathematical in romantic, impossible worlds. A founder member of artist collective and gallery The Embassy, he showed recently in 'Amaryllis Sillyrama' at the Glasgow Sculpture Studios. Grace will be exhibiting at Expo 04 at the Lowry in Manchester in September.

Jenny Stephens explores the lines and forms of modernist buildings. Her drawings and collages identify an idealistic architectural language within suburban modern living and the built environment. Stephens exhibited at WASPS PatrioHall with Shona Marsh in June. She was a founder member of artists group Totalkunst and recently joined the Collective gallery committee. She produces a quarterly art-zine called 'dodelijk'.



Ground Floor



Basement

- | | | |
|------------|----------------|---|
| 1, 2, 4, 5 | Jenny Stephens | Wester Hailes Series,
No.s 1-10 2004 |
| 3. | Tommy Grace | Cameramac 2004 |
| 6. | Tommy Grace | Refrain 2004 |
| 7. | Tommy Grace | Phantasmagoricade I 2004 |
| 8. | Tommy Grace | Still from Ambush at Lover's
Rock 2004 |
| 9. | Tommy Grace | Phantasmagoricade II 2004 |
| 10. | Louise Adam | Untitled 2004
(Pulley Performance no.3)
(Saturday only) |

Louise Adam completed her MA in Art as Environment at Manchester Metropolitan University in 2003. Her practice is mainly performance-based, concerned with communication, interaction delineation of movement. Her pulley performances remove the responsibility of mark-making from the artist; thus involving and implicating the viewer.

Surface Pressure Sound System is a one-off collaboration between four representatives of Surface Pressure Records. Armed with a laptop, violin, vocals and percussion, they present a live set of new material.