

# AURORA

## TOTALKUNST

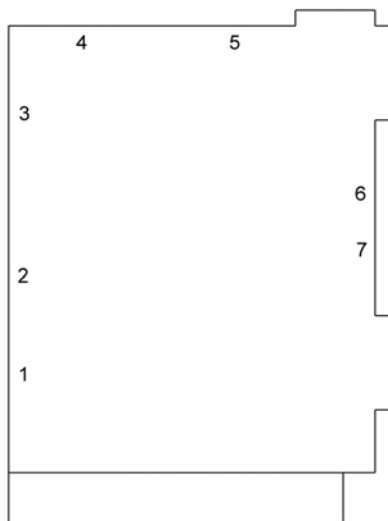
Forest Café  
2- 30 April 2004

One-night event: Friday 2 April  
Short films  
Live band: The Big Blue

Ruth Beale and Catherine Street present a joint show in the TotalKunst gallery at the Forest Cafe, as part of the ongoing TotalKunst exhibition programme. For the opening event, short films will be shown in the cafe, followed by a live set from The Big Blue. A double-sided poster commission was made possible with support from Totalkunst.

**Ruth Beale's** painting's and sculptures display a magpie's eye for decoration and ornament. Collages rendered in watercolour depict jewellery and bunting plundered from 70s royal memorabilia albums. Dislocated shapes and forms echo contrasting decorative, modernist and mythical aesthetics.

**Catherine Street's** work involves the appropriation of themes and imagery from art history and popular culture, whilst engaging with issues of eroticism, slavery, loyalty, corruption, treachery and perversity. Reticent geometric forms contrast with hand-drawn images of violence and subjugation, each undermining the other. The work explores moral ambivalence; the loosely bound victim as an icon of the fantasy of bondage within visual culture.



- |   |                  |                      |
|---|------------------|----------------------|
| 1 | Ruth Beale       | Untitled 2004        |
| 2 | Catherine Street | Untitled 2004        |
| 3 | Ruth Beale       | Black Gold Road 2004 |
| 4 | Catherine Street | Untitled 2004        |
| 5 | Ruth Beale       | 1977 2004            |
| 6 | Catherine Street | Chamber 2004         |
| 7 | Catherine Street | Untitled 2004        |

**The Big Blue** present a live set of new material. A combination of vocals, keyboard, bass and percussion, the Leeds-based foursome promise a distinctive sound, from Johnny Cash-esque bluesy moments to acoustic ambient arrangements

### Short Films

Ben Ewart-Dean	Anna
Eli Rikter-Svendsen	alt måste bli anarlunda
Zoe Sumner	Legs
Zoe Sumner	Table
Matt Brown	Untitled
Andrea Fitzpatrick & Scott McLaughlin	Audience
Matt Brown	Sky
Matt Brown	Grandad